

Customer :

customer

Customer part :

customer part

Comment :

Comment

S1=2.71

S2=3.79

Tmax=458

Tp S2=497.0

PI=0.42

HI=116

Sample =1648.60

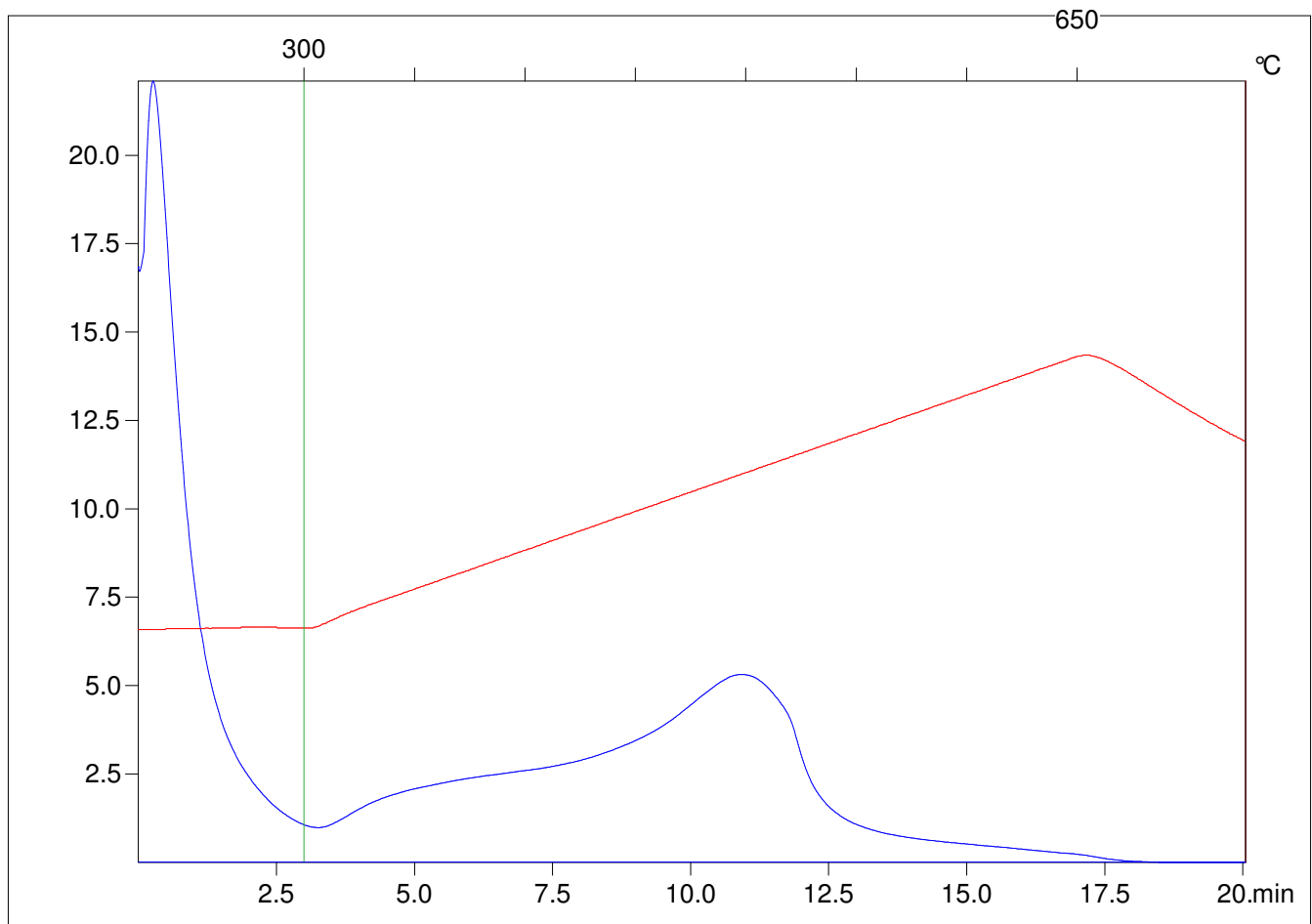
Method =Bulk Rock

Cycle=Basic

KFID(10*9)=1444

Qty =70.9

TOC=3.26



C:\VINC\PK1792\PK061.R00 : FID pyrolysis graphic

State

Pyro Status

Oxi Status